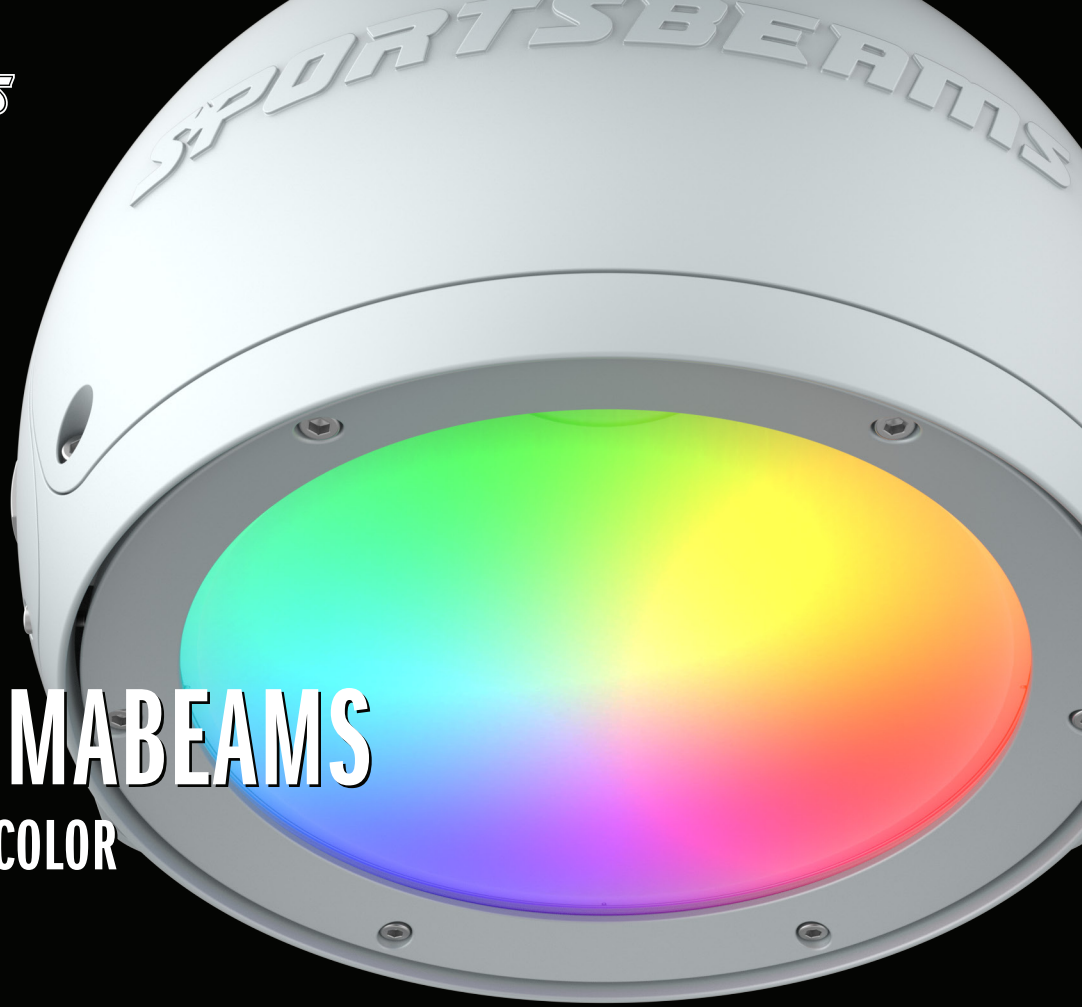


SPORTSBEAMS



ORBIT CHROMABEAMS

FULL WHITE WITH RGB COLOR
ALL IN ONE FIXTURE.



COLOR TUNABLE
WHITE



FULL
PRE-MIXED RGB



GLARE-FREE



BROADCAST
QUALITY



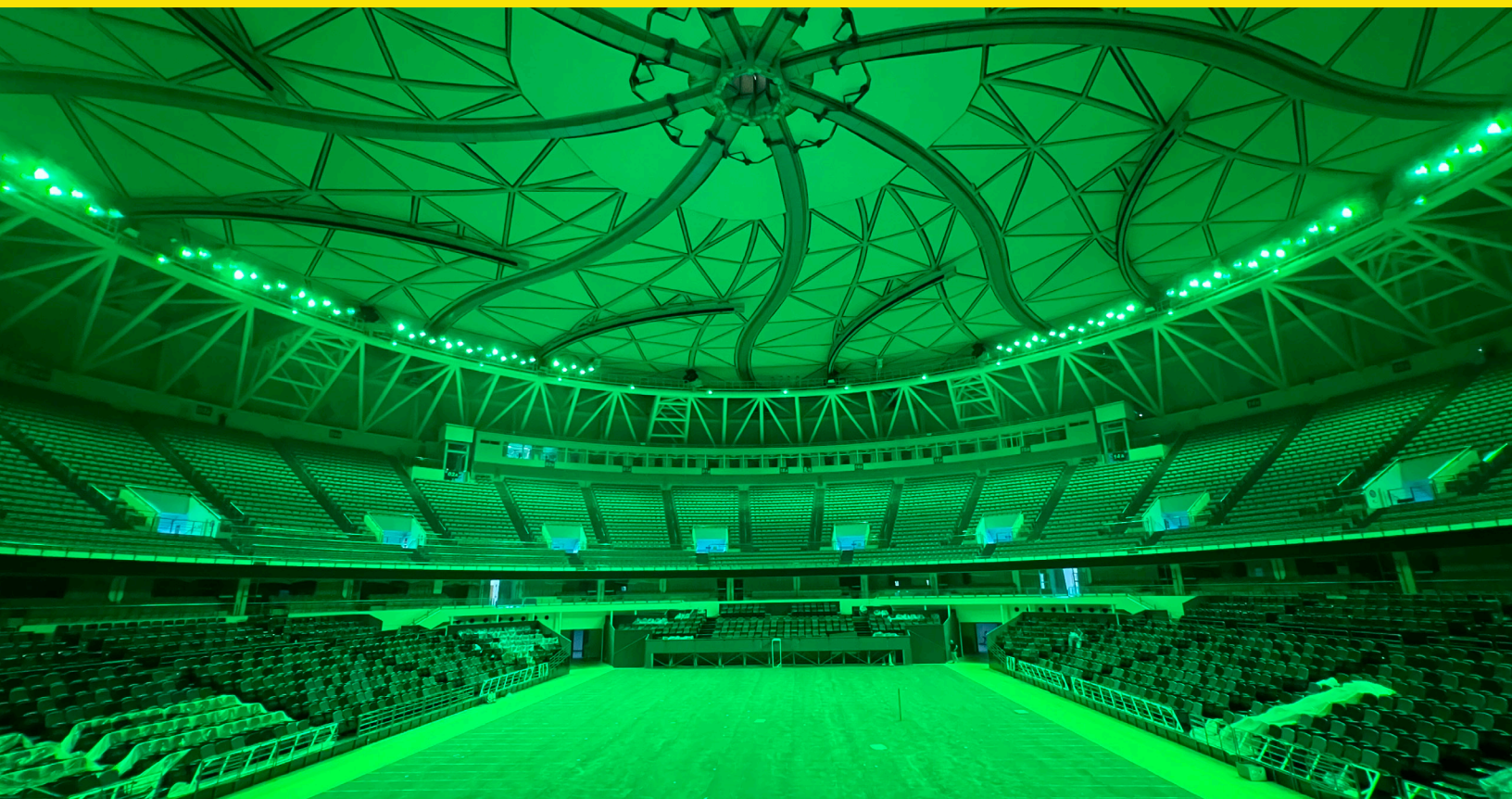
NO PLASTIC
LENSES



DYNAMIC
THERMAL PROTECTION



ADVANCED
INTELLIGENCE





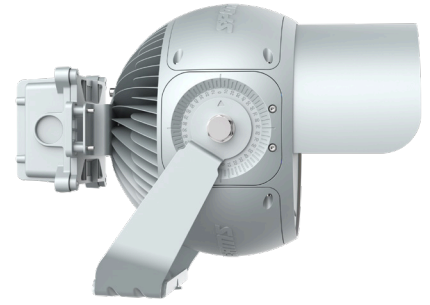
**ORBIT CHROMABEAMS
SERIES 2/3**



ORBIT WITH IK-10 CAGE



**ORBIT CHROMABEAMS
SERIES 4**



**ORBIT CHROMABEAMS
SERIES 5**

KEY FEATURES

- 200 ~ 500W LED illumination
- Up to 60,000+ lumens delivered
- Color Tunable from 1800K to 10000K
- Full RGB
- Direct DMX/RDM controllability to each fixture
- Glare-reducing, patented single glass optic for even field lighting
- High 90+ CRI color fidelity option
- Built-in over temperature protection
- IP-66 weather-tight housing & system
- 120,000+ hour rated LEDs
- IK-10 rated with optional cage attachment
- IP-67 proprietary power supply with surge protection

SPORTSBEAMS

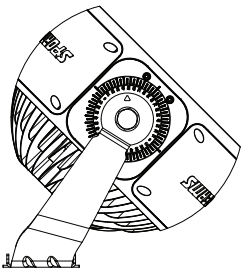
ORBIT CHROMABEAMS

RGB-AW LED Architectural & Sports Lighting Fixture

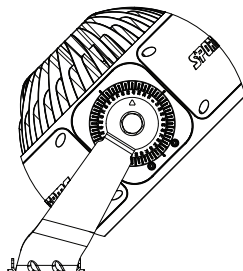
TYPICAL INSTALLATIONS

- Collegiate and Professional Arenas
- Convention Center Halls
- Gymnasiums and Auditoriums
- Stadium Egress Lighting
- Municipal Sports Fields
- Building Wall Washes
- High Mast

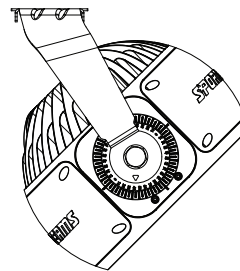
MOUNTING OPTIONS



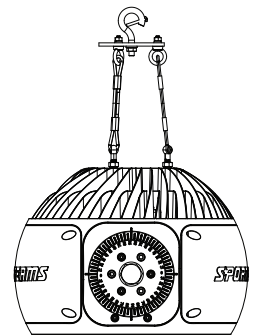
TOP MOUNT UP



TOP MOUNT DOWN



UNDERSLUNG



PENDANT MOUNT

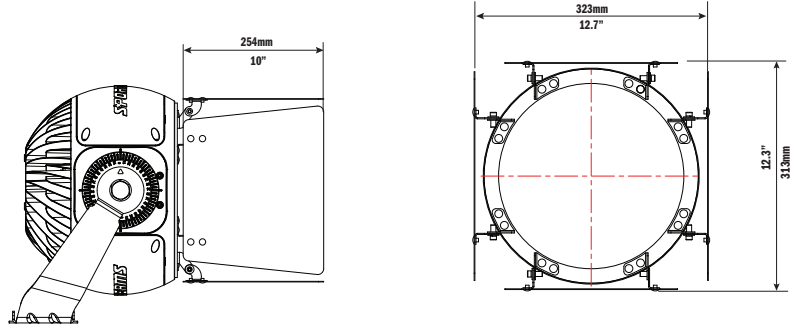
WHITE LUMEN CHART

NEMA	TEMP	CRI	SERIES 2	SERIES 3	SERIES 4	SERIES 5
4	5000K	95+	21,323	28,364	37,869	55,214
5	5000K	95+	19,152	26,600	36,176	53,201
6	5000K	95+	17,811	24,738	33,644	49,477
7	5000K	95+	15,322	21,280	28,941	42,561
4	5000K	90	21,876	29,322	39,283	56,383
5	5000K	90	19,645	27,285	37,107	54,570
6	5000K	90	18,270	25,375	34,510	50,750
7	5000K	90	15,716	21,828	29,686	43,656
4	5000K	80	23,230	32,303	43,203	62,303
5	5000K	80	21,828	30,316	41,230	60,633
6	5000K	80	20,300	28,194	38,344	56,389
7	5000K	80	17,462	24,253	32,984	48,507

RGB LUMEN CHART

COLOR	SERIES 2	SERIES 3	SERIES 4	SERIES 5
RED	2,093lm	2,907lm	4,361lm	5,814lm
GREEN	4,010lm	5,569lm	7,426lm	11,138lm
BLUE	2,244lm	3,117lm	4,232lm	5,489lm

ORBIT CHROMABEAMS SERIES 4/5 WITH BARN DOORS



SPECIFICATIONS

	SERIES 2	SERIES 3	SERIES 4	SERIES 5
LIGHT & OPTICS				
LUMEN OUTPUT RANGE	15,716 ~ 23,230	21,280 ~ 32,303	28,941 ~ 43,203	43,491 ~ 62,303
LUMEN-TO-WATT RANGE	85 ~ 121 lm/W	85 ~ 121 lm/W	85 ~ 121 lm/W	87 ~ 122 lm/W
CRI/TLCI OPTIONS ¹	80/80 90/90 95+/95+	80/80 90/90 95+/95+	80/80 90/90 95+/95+	80/80 90/90 95+/95+
EFFECTIVE CCT RANGE	4000K ~ 5700K	1800K ~ 7000K	1800K ~ 7000K	1800K ~ 7000K
FULL CCT RANGE	1800K ~ 7000K	1800K ~ 10000K	1800K ~ 10000K	1800K ~ 10000K
NEMA OPTIONS	4/5/6/7	4/5/6/7	4/5/6/7	4/5/6/7
ELECTRICAL				
SYSTEM POWER	180W	250W	340W	500W
FREQUENCY RANGE	45~66 Hz	45~66 Hz	45~66 Hz	45~66 Hz
INPUT VOLTAGE	110V ~ 277V	110V ~ 277V	110V ~ 277V	110V ~ 277V
DC VOLTAGE	48V	48V	48V	48V
CURRENT RANGE	1.63A MAX @ 100VAC	2.27A MAX @ 110VAC	3.1A MAX @ 110VAC	4.55A MAX @ 110VAC
POWER FACTOR	>=0.95	>=0.95	>=0.95	>=0.95
THD	<20%	<20%	<20%	<20%
INRUSH CURRENT	<30A	<35A	<35A	<50A
ELECTRICAL CERTIFICATIONS	FCC, CE, ETL, IK08, CB, KC, UL 924	FCC, CE, ETL, IK08, CB, KC, UL 924	FCC, CE, ETL, IK08, CB, KC, UL 924	FCC, CE, ETL, IK08, CB, KC, UL 924
SURGE PROTECTION	L-L 4kV ~ L-PE 6kV	L-L 4kV ~ L-PE 6kV	L-L 4kV ~ L-PE 6kV	L-L 4kV ~ L-PE 6kV
OVER TEMPERATURE PROTECTION	AUTOMATIC RECOVERY	AUTOMATIC RECOVERY	AUTOMATIC RECOVERY	AUTOMATIC RECOVERY
OVER VOLTAGE PROTECTION	RECOVERY AFTER POWER CYCLE	RECOVERY AFTER POWER CYCLE	RECOVERY AFTER POWER CYCLE	RECOVERY AFTER POWER CYCLE
OVER LOAD PROTECTION	AUTOMATIC RECOVERY	AUTOMATIC RECOVERY	AUTOMATIC RECOVERY	AUTOMATIC RECOVERY
CONSTRUCTION				
OPERATING TEMPERATURE RANGE ²	-40°C to +50°C	-40°C to +50°C	-40°C to +50°C ³	-40°C to +50°C
USAGE ENVIRONMENTS	INDOOR, OUTDOOR	INDOOR, OUTDOOR	INDOOR, OUTDOOR	INDOOR, OUTDOOR
MOUNTING OPTIONS	PEDESTAL, PENDANT	PEDESTAL, PENDANT	PEDESTAL, PENDANT	PEDESTAL, PENDANT
ENVIRONMENTAL CERTIFICATIONS	ROHS, FCC, SALT SPRAY	ROHS, FCC, SALT SPRAY	ROHS, FCC, SALT SPRAY	ROHS, FCC, SALT SPRAY
VIBRATION	ANSI C136.31-2010 3G	ANSI C136.31-2010 3G	ANSI C136.31-2010 3G	ANSI C136.31-2010 3G
EFFECTIVE PROJECTED AREA (EPA)	1.34 (FT ²) with or without visor	1.34 (FT ²) with or without visor	1.79 (FT ²) with or without visor	1.82 (FT ²) with or without visor
IMPACT RATING WITH CAGE	IK-10	IK-10	IK-10	IK-10
APPROXIMATE WEIGHT ⁴	14.3lbs	14.3lbs	26lbs	29lbs

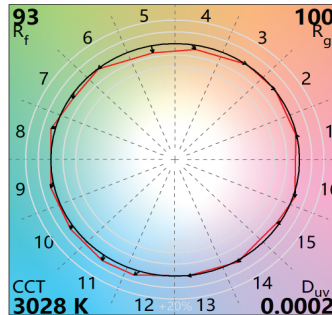
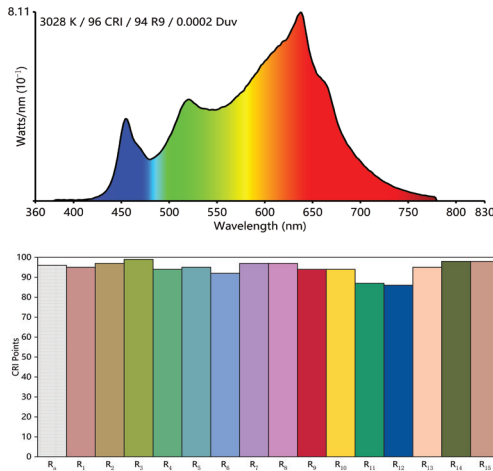
NOTES:

(1) Specifications are subject to change without notice
 (2) Values are +/- 5%

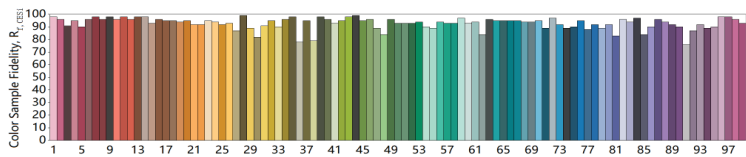
(3) Values are +/- 4% when fixture is operated at 25°C ambient
 (4) Weight may vary depending on mounting bracket

COLOR RENDERING INDEX RESULTS

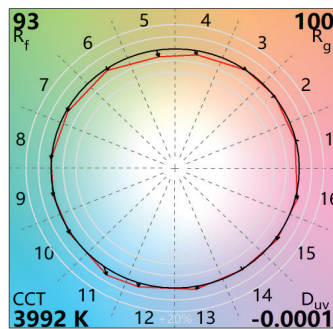
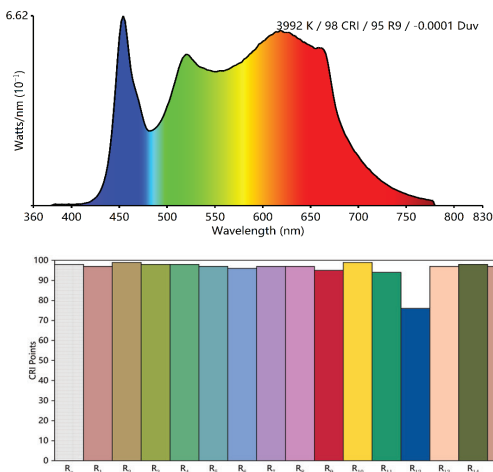
IES TM-30-18 COLOR RENDITION REPORT @3000K CRI 95+



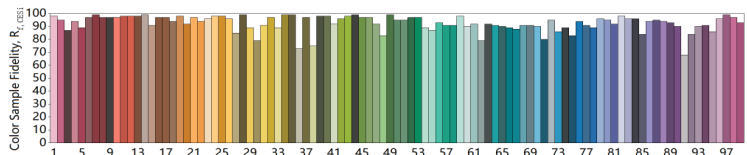
Direct spectrum input : CCT = P3028 (0.0)
TLCI-2012 : 95 (P3028)



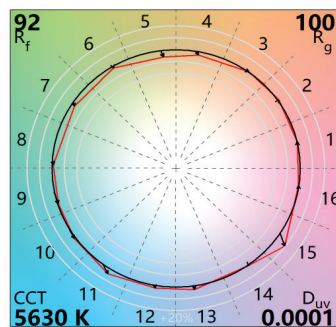
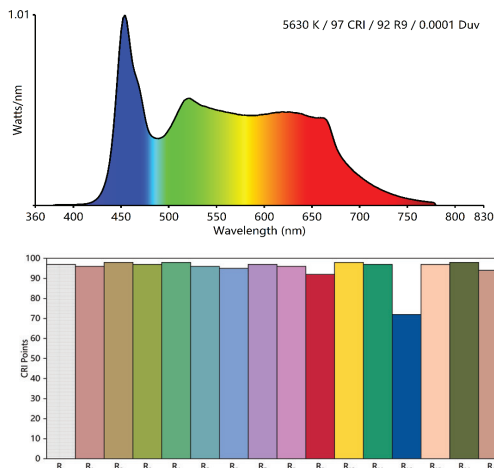
IES TM-30-18 COLOR RENDITION REPORT @4000K CRI 95+



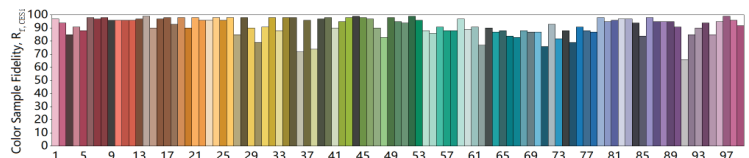
Direct spectrum input : CCT = M3992 (0.0)
TLCI-2012 : 98 (M3992)



IES TM-30-18 COLOR RENDITION REPORT @5600K CRI 95+

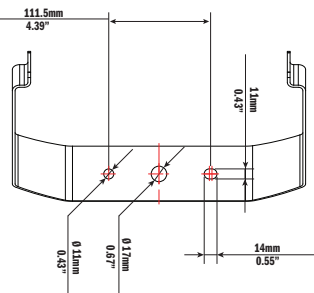


Direct spectrum input : CCT = D5630 (-0.6)
TLCI-2012 : 98 (D5630)

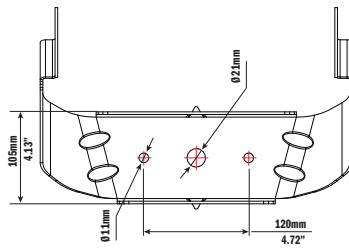




FIXTURE BASE

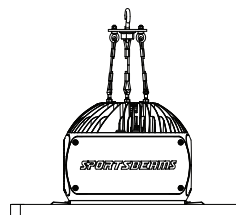


SERIES 2/3

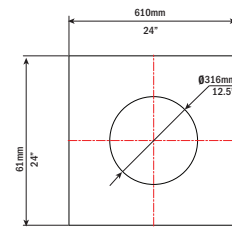


SERIES 4/5

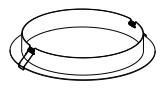
CEILING TILE SNOOT



ORBIT 4/5 WITH CEILING TILE SNOOT

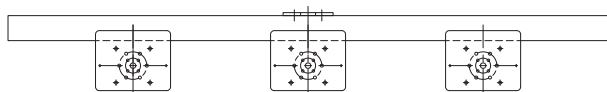


CEILING TILE HOLE

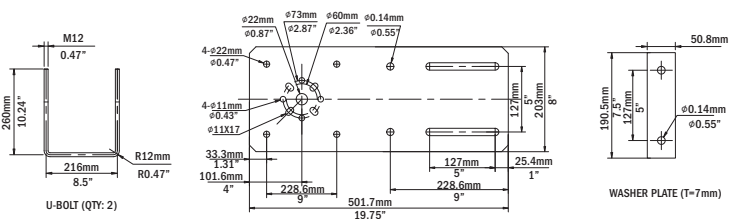


BEZEL TRIM

3-FIXTURE CROSS ARM FOR POLE



RETROFIT CROSSARM PLATE



U-BOLT (QTY: 2)

WASHER PLATE (T=7mm)



UL Listing: Suitable for wet locations.